



Planner 2024-25 & Rulebook



THE FORM



The droplet or the Tilak- one of the most efficient and aerodynamic geometric forms, found abundantly in nature, from raindrops to candleflames to celestial comets, and harnessed by humanity, as aeroplanes and submarines, put on the forehead as a symbol of our inner selves, aspiring to rise up, transcend and enlighten not just our individual selves but the whole world.

The Blue



Symbolises our intellectual self or the mind- sharp and clear like the sky or the ocean .

The Orange



Symbolises our physical self or the body- strong, efficient, determined, dynamic, goal-oriented, a team player.

The Green



Symbolises our inner self, the heart or the soul- calm, kind, gracious, aware of the self, and its deep connection with the whole world and all of life.


The Hidden Form



A child, an individual, embracing the globe, with this blue green planet as the focal point of our collective consciousness.



SCHOOL FACT SHEET

School Logo	:	
School Motto	:	Empowerment Empathy Excellence
Affiliated to	:	CBSE
Classes	:	Nursery to XII
Postal Address	:	HS-02, Greater Noida, Techzone 4, Amrapali Dream Valley, West, Uttar Pradesh 201308
Telephone Numbers	:	9643370000, 9643380000
Email	:	info@pacificworldschool.com

Summer School Timings-

Nursery to II	:	8:30 am to 1:15 pm
III to XII	:	7:20 am to 2:20 pm

Winter School Timings-

Nursery to II	:	9:00 am to 1:30 pm
III to XII	:	7:50 am to 2:45 pm

***Subject to government regulations and weather conditions**

APPOINTMENTS

Parents can meet the following with PRIOR APPOINTMENT ONLY. Kindly send an appointment request to the given email IDs for the same.

School Principal	:	pa@pacificworldschool.com
Headmistress (Classes III to XII)	:	awani@pacificworldschool.com
Senior Mistress (Classes Nursery to II)	:	poojasuri@pacificworldschool.com
Coordinator, Class Teacher and Subject Teacher	:	via ERP

*Alternatively, parents can also seek appointments via the front-desk by writing an email to **info@pacificworldschool.com** or through the given phone number **9643370000**.

*Please abide by the time allocated for the meeting.

*Meetings without prior appointments will not be entertained

CONTENTS

1	SCHOOL LOGO
3	SCHOOL FACT SHEET
4-6	SCHOOL CALENDAR 2024-25
7-8	LIST OF HOLIDAYS 2024-25
9-22	ACTIVITIES AND COMPETITIONS FOR THE SESSION 2024-25
23-24	SCHOOL RULES
25	RECOMMENDATIONS TO THE PARENTS/GUARDIANS
26	LATE ARRIVALS, ATTENDANCE AND LEAVE RULES
27	CORRECTIVE MEASURES
28	WITHDRAWALS
29	SCHOOL TRANSPORT AND BUS RULES
30-35	POLICY/SCHEME OF EXAMINATIONS AND EVALUATION
36	IGNITED MINDS-SCHOOL LIBRARY

SCHOOL CALENDAR 2024-25

NEW ACADEMIC SESSION 2023-24

Classes X & XII	-	Tuesday, 12 March 2024
Classes VI - IX	-	Monday, 1 April 2024 (Online)
Classes III - V	-	Wednesday, 3 April 2024 (Offline)
Classes Nur-II	-	Monday, 1 April 2024 (Online)

SUMMER BREAK

Class X - XII	-	June 1, 2024
Classes VI - IX	-	May 27,2024
Classes III to V	-	May 27,2024
Classes Nursery - II	-	May 27,2024

School reopens after summer break(Nursery -XII) on July 1, 2024

DUSSEHRA BREAK

Friday, 11 October 2024 – Sunday, 13 October 2024

DEEPAWALI BREAK

Wednesday, 30 October 2024 – Sunday, 3 November 2024

WINTER BREAK

Monday, 30 December 2024 – Sunday, 5 January 2024

School reopens on Monday, 6 January 2024

SCHOOL CALENDAR 2024-25

HALF-YEARLY EXAMINATION (CLASSES III-XII)

Class III - September 9, 2024 - September 19, 2024

Classes IV to VIII - September 6, 2024 - September 23, 2024

II TERM COMMENCES

Class III - September 23, 2024

Classes IV to VIII - September 25, 2024

Classes IX and X - September 21, 2024

Classes XI and XII - September 25, 2024

ANNUAL EXAMINATION (CLASSES III to VIII)

Class III - February 27, 2025 - March 10, 2025

Classes IV to VIII - February 21, 2025 - March 10, 2025

ANNUAL EXAMINATION (IX and XI)

Classes IX - February 10, 2025 - February 24, 2025

Classes XI - February 10, 2025 - February 27, 2025

PRE-BOARD I EXAMINATION (CLASSES X and XII)

Class X - November 11, 2024 - November 25, 2024

Class XII - November 11, 2024 - November 27, 2024

PRE-BOARD II EXAMINATION (CLASSES X and XII)

Class X - December 11, 2024 - December 23, 2024

Class XII - December 9, 2024 - December 23, 2024

SCHOOL CALENDAR 2024-25

FORMATIVE ASSESSMENT 1

GRADE I & II – MAY 13, 2024 – MAY 16, 2024

FORMATIVE ASSESSMENT 2

GRADE I & II – AUGUST 5, 2024 – AUGUST 8, 2024

FORMATIVE ASSESSMENT 3

GRADE I & II – NOVEMBER 18, 2024 – NOVEMBER 21, 2024

FORMATIVE ASSESSMENT 4

GRADE I & II – MARCH 5, 2025 – MARCH 11, 2025

LIST OF HOLIDAYS 2024-25

HOLIDAY	DATE	DAY
Eid-UI-Fitr	11.04.2024	Thursday
Ambedkar Jayanti	14.04.2024	Sunday
Ram Navami	17.04.2024	Wednesday
Mahavir Jayanti	21.04.2024	Sunday
Buddha Purnima	23.05.2024	Thursday
Bakrid	17.06.2024	Monday
Muharram	17.07.2024	Wednesday
Independence Day	15.08.2024	Thursday
Raksha Bandhan	19.08.2024	Monday
Janmashtami	26.08.2024	Monday
Id-e-Milad	16.09.2024	Monday
Gandhi Jayanti	02.10.2023	Wednesday
Dussehra	11.10.2024 - 13.10.2024	Friday - Sunday
Valmiki Jayanti	17.10.2024	Thursday
Deepawali	30.10.2024 - 03.11.2024	Wednesday - Sunday
Chhat Puja	07.11.2024	Thursday
Guru Nanak Jayanti	15.11.2024	Friday
Guru Tegh Bahadur Martyrdom Day	24.11.2024	Sunday
Christmas	25.12.2024	Wednesday
Makar Sankranti/ Hazrat Al's Birthday	14.01.2025	Tuesday

Disclaimer- Schedule and dates are subject to change due to unforeseen circumstances.

LIST OF HOLIDAYS 2024-25

HOLIDAY	DATE	DAY
Republic Day	26.01.2024	Sunday
Vasant Panchami	02.02.2025	Sunday
Guru Ravidas Jayanti	12.02.2025	Wednesday
Mahashivratri	26.02.2025	Wednesday
Holi	13.03.2025	Thursday

Disclaimer- Schedule and dates are subject to change due to unforeseen circumstances.

ACTIVITIES AND COMPETITIONS FOR THE SESSION 2024-25 CLASS – NURSERY

Month	Activities/ Competitions
April- May	<ul style="list-style-type: none"> • I Am Special (Mirror Talk Activity) • Musical Scribbling • Shape-O-Magic • Eid-ul-fitr-Celebration • My Mother Earth - Earth Day Celebration • Swirl-n-Twirl - International Dance Day Celebration • Mom & Me - Mother's Day Celebration • Beat the Heat Week (Summer Week) • I Love My Family - Bring and Brag
July	<ul style="list-style-type: none"> • Fit Me - Fitastic Week • Let's Scream for Ice Cream - Ice Cream Day • My Five Stars - Sense Station Activity • Junior Chef Activity • Mangolicious Day • Magic with Colours - Colouring Competition • Fit Fusion - Bring and Brag
August	<ul style="list-style-type: none"> • My Little Seed • Our Friendship is blooming - Friendship Day • Elmer the Elephant - Elephant Day Celebration • I Spy with my Eye - Garden Activity • Raksha Bandhan Celebration • Mor Mukut Nand Kishore - Janmashtami Celebration • I Hear Thunder - Bring & Brag • Jashn-e-Azadi- Hindi poem recitation Competition
September	<ul style="list-style-type: none"> • Teacher's Day Celebration • My Friend Ganesha - Ganesh Chaturthi • Metal Movers - Transport Week • Vroom Vroom Car • Tearing & Pasting - Water Transport • Flameless Cooking - Traffic Light • Let's Get Moving - Bring and Brag

*subject to changes beyond our control

Month	Activities/ Competitions
October	<ul style="list-style-type: none"> • Gandhi Jayanti - Shramdaan Activity • Visit to Clinic - Health Card Activity • Healthy Me Happy Me - Hygiene Week • Global Handwashing Day • Victory Good over Evil - Dussehra Celebration • Roshn-e-Diwali - Diwali Celebration • Spooky Fiesta - Halloween • Be Clean Be Healthy - Bring and Brag
November	<ul style="list-style-type: none"> • Children's Day - Masti Ki Paathshaala • Jingle in Jungle Parade • Kindness Day - Be Kind to Animals • Gurupurab Celebration • Origami - Dog Making • Pet Animals: My Best Friend - Bring and Brag
December	<ul style="list-style-type: none"> • Fit India Hit India (Fit India Week) • Wings & Feathers Activity • Feed a Bird Activity • Creepy Crawlers Activity • Christmas Wishlist • Christmas Celebration • National Mathematics Day • Spread Your Wings - Bring and Brag • Merry Maker's Christmas Craft Competition
January	<ul style="list-style-type: none"> • Welcome to the Wonderland- The Magic of Fairy Tales • Popcorn Day - Lohri Celebration • Our Nation Our Pride - National Symbols Week • Republic Day Celebration • Gratitude Day - Thanking Community Helpers • Helping Hands - Bring and Brag
February - March	<ul style="list-style-type: none"> • Basant Panchami Celebration • My Safe Circle • Rang Ke Sang - Holi Celebration • World Wildlife Day • Get Set Go! - Bring & Brag • Fun Races/Hurdle Races • Whispering Words - Intra Class English Rhyme Competition

*subject to changes beyond our control

ACTIVITIES AND COMPETITIONS FOR THE SESSION 2024-25 CLASS – LKG

Month	Activities/ Competitions
April- May	<ul style="list-style-type: none"> • I Am Unique (Mirror Talk Activity) • Shape-O-Mania • Eid-UI-Fitr Celebration • Love Green, Live Green and Think Green (Earth Day Activity) • Swirl & Twirl (International Dance Day) • Mom & Me (Mother's Day Celebration) • Nurturing Nurse Day Celebration • Sunshine Week (Summer Week) • Fam Jam (Bring and Brag)
July	<ul style="list-style-type: none"> • Fun with Fitness (Fitastic Week) • My Rainbow Plate • Engage with My Senses • Flameless Cooking • Mangolicious Day (National Mango Day) • Magic with Colours (Intra Class Colouring Competition) • Fit And Fabulous (Bring and Brag)
August	<ul style="list-style-type: none"> • Plant Buddies (Friendship Day Celebration) • Life of a Seed • Rakshabandhan Celebration • Let's Explore (Garden Activity) • Janmashtami Celebration (Matki and Basuri Decoration) • Monsoon Magic (Bring and Brag) • Bharat ke Veer – Role play Competition
September	<ul style="list-style-type: none"> • Teachers Day Celebration • Let's Get Moving (Transport Week) • Shape-O-Transport (Origami Work) • Ganesh Chaturthi (Ladoo Making) • Transportation Theme Culmination • Ride To Happiness (Bring and Brag)

*subject to changes beyond our control

Month	Activities/ Competitions
October	<ul style="list-style-type: none"> • Shramdan Mahadan (Gandhi Jayanti Celebration) • Hygiene Hero (Health and Hygiene Week) • Visit to Clinic (Health Card Activity) • Global Handwashing Day • Dussehra Celebration (Triumph of Good Over Evil) • Spooky Fiesta (Halloween Celebration) • Roshan-E-Diwali (Diwali Celebration) • Healthy Me Is Happy Me (Bring and Brag)
November	<ul style="list-style-type: none"> • Masti Ki Pathshala (Children's Day Celebration) • Gurpurab Celebration • Zoo Scavenger Hunt • Jingle in Jungle (Animal Parade) • Kindness Day Celebration (Be Kind to Animals) • Speak For the Unspeakable (Bring and Brag)
December	<ul style="list-style-type: none"> • Fit India, Hit India (Fit India Week) • Buzzy Bee Activity • Creepy Crawler Symmetry Splash • Wings and Feathers (Bird Craft) • National Mathematics Day • Christmas Wishlist • Christmas Celebration • Spread Your Wings (Bring and Brag) • Merry Maker's Christmas Craft Competition
January	<ul style="list-style-type: none"> • Welcome to Wonderland - The Magic of Fairy Tales • Lohri Celebration • Republic Day Celebration • Our Nation, Our Pride (National Symbol Activity) • Gratitude Is the Best Attitude (Bring and Brag)
February - March	<ul style="list-style-type: none"> • Basant Panchami Celebration • My Safety Circle • Water Is Life, Use It Right (World Water Day) • Rang Ke Sang (Holi Celebration) • Shoes On, Game On (Bring and Brag) • Fun Races/Hurdle Races • Whispering Words (Intra Class English Rhyme Recitation Competition)

*subject to changes beyond our control

ACTIVITIES AND COMPETITIONS FOR THE SESSION 2024-25 CLASS – UKG

Month	Activities/ Competitions
April- May	<ul style="list-style-type: none"> • Go Green and Save Green – Earth Day Celebration • Mom And Me - Mother's Day Activity • The Heart of Health Care - International Nurses Day • Marvelous Me – Mirror Talk Activity • Eid-UI-Fitr Celebration • Connecting Hearts Forever- National Sibling Day • Hello Summer! - Summer Week • Shake A Leg – International Dance Day • My Fantastic Family - Bring and Brag • Celebrating Hard Work and Dedication. Happy Labour Day
July	<ul style="list-style-type: none"> • My Five Senses: Cookie Trivia Activity • Restaurant Set Up, Eating Etiquette • Flameless Cooking • Mangolicious Day - National Mango Day • Roar For Tigers -International Tiger Day • Health Is Wealth: Bring & Brag • Magic With Colours – Colouring Competition
August	<ul style="list-style-type: none"> • Life of A Plant: Germination of Seeds • Independence Day Celebration • Vrikshabandhan Activity – Raksha Bandhan Celebration • Let's Be Friends with Books: Friendship Day Celebration • Yashodha Ki Mataki: Mataki Making and Decoration • My Blooming Garden Bring and Brag Competition
September	<ul style="list-style-type: none"> • Panchatantra: Fun with Experiments Week • Teacher's Day Celebration • Junk-O-Wheel: DIY Vehicle Craft • Designing Traffic Symbols • World Literacy Day (DEAR Time) • Transportation- A Miracle Bring and Brag

*subject to changes beyond our control

Month	Activities/ Competitions
October	<ul style="list-style-type: none"> • Shramdaan – Cleanliness Drive • Dussehra - Light and Dark Inside Us • Clean Me, Happy Me – Health and Hygiene Week • Gobar Hand Washing Day Activity • Visit To Clinic - Health Card Activity • Green Diwali Parade • Witch-Ing You Happy Halloween - Halloween Celebrations • Raso, Ek Dawaai -Bring and Brag
November	<ul style="list-style-type: none"> • Masti Ki Pathshala - Children’s Day Celebration • Design Thinking: Designing Animal Habitat • Nanhe- Kahaanikaar/ Aao Bune Kahaaniyan • Make A Kindness Rainbow • Under Water World- Bring and Brag Activity • Gurupurab Celebration
December	<ul style="list-style-type: none"> • From Pearl to Wings (Lifecycle of Butterfly) • Bird Feeder Craft • Fit India, Hit India- Fit India Week • The Joy of Giving • Christmas Celebration • National Mathematics Day • Vyanjan Vriksh • The Magical Phylum of Birds- (Bring and Brag) • Merry Makers – Christmas Craft Competition
January	<ul style="list-style-type: none"> • Welcome to The Wonderland- The Magic of Fairy Tales • Our Nation Our Pride- National Symbols Activity • (Republic Day Celebration) • Republic Day Celebration • Lohri Aai Banke Ujala – Lohri Celebration • My Favourite Community Helper -Bring and Brag Activity
February - March	<ul style="list-style-type: none"> • Swarn Ka Guldasta • Basant Panchami Celebration • My Safe Circle - Safety Activity • Rang Ke Sang: Holi Celebration • Khelo India- Bring and Brag Activity • International Day Of Happiness. • Fun Races/Hurdle Races • Whispering Words: English Rhyme Recitation Competition

*subject to changes beyond our control

ACTIVITIES AND COMPETITIONS FOR THE SESSION 2024-25 CLASS – I

Month	Activities/ Competitions
April- May	<ul style="list-style-type: none"> • Welcome Craft • Fit Pacificans (World Health Day) • Swar Mala • My Name Plate -Super Me! • My Super Mom! • My Vowel Garden • Don't Spill The Beans • Mandala Art • S.T.E.M Week
July	<ul style="list-style-type: none"> • Noun Treasure Chest • Shabdon Ki Varsha • Family Booklet • Addition Odyssey • Ascend - O - Rank • Descend - O – Rank • My Sense Station • English Week • Drawing And Colouring Competition
August	<ul style="list-style-type: none"> • Sentence Construction Builders • Bharat Ke Veer • Culinary Diversity • Whack- A - Ball • Natkhat Kanha • Hindi Story Telling Competition
September	<ul style="list-style-type: none"> • Punctuation Party • Hindi Week • My Trust Tree • I Am The Master Chef (Fireless Cooking) • Feed The Hungry Penguin • Digraph Hunt

*subject to changes beyond our control

Month	Activities/ Competitions
October	Adjective Rainbow Painting Rhyme Time Challenge Chitr Varnan Gratitude Jar Spin And Solve Bring And Brag Who We Are?(Role Play On Community Helpers)
November	Verb Safari Hunt Soojhe Boojh Se Suno Samjho Aur Likho Mailbox Activity My Multiplication City Gurpurab Celebrations Around The World
December	Preposition Hide-And-Seek Matra Ghadi Season Wheel Math Week Auto Archive - Walk Around The School Time Crafters Merry Makers Pic-Collage (Sdg Goals) Celestial Being Collage Competition
January	Story Starters Spin Matra Nritya My Backpack Coin Pinchers Lohri Celebrations
February - March	Grammar Bingo Bonanza Khel Khel Mein Gaming Zone Math - O – Magic Katputli-The Puppet Show Dress Up Day – Intra Class Competition

*subject to changes beyond our control

ACTIVITIES AND COMPETITIONS FOR THE SESSION 2024-25 CLASS – II

Month	Activities/ Competitions
April- May	<ul style="list-style-type: none"> • Welcome Activity • World Health Day • Word Builder • My Mom, My World! • Earth Day Craft • World Bee Day • STEAM Week
July	<ul style="list-style-type: none"> • Abacus Activity • National Paper Bag Day Activity • International Tiger Day – Tiger Mask Activity • Life Skill Activity- Be Clean! Be Healthy! • English Week • Katputli Tantra – Hindi Story Narration Puppets
August	<ul style="list-style-type: none"> • Photo frame Making -World Photography Day • Freedom Fighter - Role Play • Food Pyramid • Life Skills- Table Manners and Etiquettes • Senior Citizens Day
September	<ul style="list-style-type: none"> • World First Aid Day-First Aid Box Activity • Hindi Week • Ganesh Chaturthi Celebration- Craft Activity • Life Skill Activity- Collaboration • Junkbots – Unearthing Robots Through Trash
October	<ul style="list-style-type: none"> • State Ambassador Activity • Gandhi Jayanti Activity • Dussehra Activity • My Pattern Is My Creation: Creating City Scape Through Shapes
November	<ul style="list-style-type: none"> • Endangered and Extinct Animals - Collage Making • Life Skills - Table Etiquettes • Oil Spill Clear Experiment • Jingle Mania – Ad Making Competition

*subject to changes beyond our control

Month	Activities/ Competitions
December	<ul style="list-style-type: none"> • World Conservation Day • World Soil Day: - Seed Ball Making • Letter to Santa • Life Skill - Sharing Is Caring - Joy of Giving Activity • Math Week
January	<ul style="list-style-type: none"> • Indian Army Day • Lohri Celebrations • Time Management -Clock Activity
February - March	<ul style="list-style-type: none"> • World Science Day • Design Thinking Activity • Chocolate Day -Flameless Chocolate Balls • World Wildlife Day • Basant Panchmi-Welcome Spring • Be The Coolest RJ Competition

*subject to changes beyond our control

ACTIVITIES AND COMPETITIONS PLANNED FOR CLASSES III TO V SESSION 2024-25

Month	Events /Competitions
April & May	<p>Inter House Competitions:</p> <ul style="list-style-type: none"> • Inter House Badminton Competition <p>Intra/Inter Class Competitions:</p> <ul style="list-style-type: none"> • Intra Class English Handwriting Competition • Intra Class Hindi Sulekh Competition • Intra Class Competition - Saga -Autobiography of an Object • Intra Class Math-O-Rap Competition <p>Special Week and Events:</p> <ul style="list-style-type: none"> • STEAM Week
July	<p>Inter House Competitions:</p> <ul style="list-style-type: none"> • Inter House Yoga Competition <p>Intra/Inter Class Competitions:</p> <ul style="list-style-type: none"> • Intra Class Tale with a Twist Competition <p>Special Week and Events:</p> <ul style="list-style-type: none"> • Third Language Week (IV-V)
August	<p>Inter House Competitions:</p> <ul style="list-style-type: none"> • Inter House Skating Competition <p>Intra/Inter Class Competitions:</p> <ul style="list-style-type: none"> • Inter Class Computer Science Competition • Inter Class English Spell Bee Competition (First Round) <p>Special Week and Events:</p> <ul style="list-style-type: none"> • Cyber Week
September	<p>Intra/Inter Class Competitions:</p> <ul style="list-style-type: none"> • Intra Class Ashu Bhashan Competition (III-IV) • Intra Class Patra Abhinay Competition (Hindi) (V) <p>Special Week and Events:</p> <ul style="list-style-type: none"> • Hindi Week

*subject to changes beyond our control

Month	Events /Competitions
October	<p>Inter House Competitions:</p> <ul style="list-style-type: none"> • Inter House Art Competition • Inter House Table Tennis Competition <p>Intra/Inter Class Competitions:</p> <ul style="list-style-type: none"> • Intra Class Hasya Kavita Vachan Competition (III) • IntraClass Anuched Lekhan Competition (IV) • Intra Class Vad Vivad Competition (V) <p>Special Week and Events:</p> <ul style="list-style-type: none"> • Art and Craft Week
November	<p>Inter House Competitions:</p> <ul style="list-style-type: none"> • Inter House Cricket Competition • Inter House Basketball Competition <p>Intra/Inter Class Competitions:</p> <ul style="list-style-type: none"> • Inter Class English Spell Bee Competition (Second Round), • Intra Class Character Portrayal Competition (III), • Intra Class Radio Jockey Competition (IV) • Intra Class Stamp Designing Competition (V) <p>Special Week and Events:</p> <ul style="list-style-type: none"> • Social Science Week
December	<p>Inter House Competitions:</p> <ul style="list-style-type: none"> • Inter House Gymnastics Competition <p>Intra/Inter Class Competitions:</p> <ul style="list-style-type: none"> • Inter Class Mathematics Competition- Mathdoku (III-IV) • Inter Class Tessellation Competition (V) • Intra Class Declamation Competition (III-V) <p>Special Week and Events:</p> <ul style="list-style-type: none"> • Math Week
January & February	<p>Inter House Competitions:</p> <ul style="list-style-type: none"> • Inter House Taekwondo Competition(IV-V) • Inter House Kho-Kho Competition (III) <p>Intra/Inter Class Competitions:</p> <ul style="list-style-type: none"> • Inter Class English Spell Bee Competition (Final Round) • Intra Class Extempore Competition (III-V) <p>Special Week and Events:</p> <ul style="list-style-type: none"> • English Week

*subject to changes beyond our control

ACTIVITIES AND COMPETITIONS PLANNED FOR CLASSES VI TO XII SESSION 2024-25

Month	Events /Competitions
April & May	<p>Inter House Competitions:</p> <ul style="list-style-type: none"> • Inter House Badminton Competition (Classes VI-XII) • Inter House Flash Mob Competition (Classes VI-VIII) <p>Intra/Inter Class Competitions:</p> <ul style="list-style-type: none"> • Intra Class Declamation Competition (Classes VI-XI) • Intra Class Gen Talk Competition(Classes VI-IX) <p>Special Week and Events:</p> <ul style="list-style-type: none"> • STEAM Week (Classes III-XII)
July	<p>Inter House Competitions:</p> <ul style="list-style-type: none"> • Inter House Basketball Competition (Classes VI-XII) <p>Special Week and Events:</p> <ul style="list-style-type: none"> • Third Language Week (Classes III-X) • THINKQUEST (Classes VI-VIII) • Commerce Fair (XI & XII)
August	<p>Inter House Competitions:</p> <ul style="list-style-type: none"> • Inter House Cricket Competition (Classes VI-XII) <p>Intra/Inter Class Competitions:</p> <ul style="list-style-type: none"> • Inter Class Creative Board Competition (Classes VI-IX) <p>Special Week and Events:</p> <ul style="list-style-type: none"> • Cyber Week (Classes III-XII) • PACMUN
September	<p>Special Week and Events:</p> <ul style="list-style-type: none"> • Hindi Week (Classes III- IX)

*subject to changes beyond our control

Month	Events /Competitions
October	<p>Inter House Competitions:</p> <ul style="list-style-type: none"> • Inter House Hindi Debate Competition (Classes VI-IX) • Inter House Football Competition (Classes VI-IX & XI) <p>Special Week and Events:</p> <ul style="list-style-type: none"> • Art & Craft Week (Classes III-VIII) • Dance & Music Fest (Classes VI-VIII)
November	<p>Inter House Competitions:</p> <ul style="list-style-type: none"> • Inter House Athletics Competition (VI-IX & XI) <p>Intra/Inter Class Competitions:</p> <ul style="list-style-type: none"> • Intra Class Pen & Recite a Poem Competition (VI-VIII) <p>Special Week and Events:</p> <ul style="list-style-type: none"> • Social Science Week (Classes III-IX & XI) • Annual Presentation (Classes V-VIII)
December	<p>Inter House Competitions:</p> <ul style="list-style-type: none"> • Inter House Shark Tank Competition (Classes VIII & IX) • Inter House Carol Singing Competition (Classes VI & VII) <p>Intra/Inter Class Competitions:</p> <ul style="list-style-type: none"> • Inter Class Sudoku Competition (Classes VI-IX) <p>Special Week and Events:</p> <ul style="list-style-type: none"> • Math Week (Classes III-IX)
January & February	<p>Special Week and Events:</p> <ul style="list-style-type: none"> • English Week

*subject to changes beyond our control

SCHOOL RULES

1. Students who come to school by their own transport should arrive at school before the bell rings. No student is allowed to come to school in a self-driven scooter, motorcycle or car.
2. Students should be neatly dressed. The school uniform is to be worn on every working day. Students who are sloppily dressed or not in uniform will be dealt with severely.
3. Non-Sikh boys should get their hair cut at regular intervals. **No fancy haircuts are allowed in school.**
4. Girls should plait their hair if it is below the shoulders. Short hair should be neatly cut and pinned. **Kindly note the streaking/highlights/fancy hairstyles are strictly not allowed.**
5. Students are expected to respect the property of others. This includes respect for school property. No student should damage any school furniture, write or draw anything on walls, furniture or in any way damage things belonging to others. Damage done even by accident should be reported at once to the Class Teacher or to the Principal. Any damage done will be made good by the one who has caused it.
6. The school is not responsible for goods lost. It is advisable not to bring valuable articles (like watches or cell phones, i -pods, cameras etc.) to school.
7. Students are not allowed to wear any jewellery to school (no chains, rings, bangles, bracelets). Girls may wear one pair of small earrings or studs only. Girls should not wear kajal, eyeliner or any kind of makeup.
8. Students should be polite wherever they go. They should always remember that the school is judged by their conduct. They should greet their teachers, guards, didis and bhaiyas when they meet them. **Bullying and use of foul language are punishable offences.**
9. The school reserves the right to suspend or to take strict disciplinary action against a student whose diligence or progress in studies is constantly unsatisfactory or whose conduct is harmful to other students.
10. **Parents and guardians should not visit their wards or teachers in the classrooms without the permission of the Principal.**
11. As far as possible, once a child has come to school, he/she should not be asked to come home on half day leave or leave from any period, unless it is an emergency. **Please note that short leaves/half day leaves will not be allowed except for in case of medical reasons.**
12. Pacific World School provides education from Nursery to Class XII. Therefore, it is expected that juniors should be treated with love and affection, while the juniors show all respect to their seniors

SCHOOL RULES

13. No student shall indulge in any of the following practices namely-
 - a. Spitting in or near the school building.
 - b. Disfiguring or otherwise damaging any school property.
 - c. Rowdyism and rude behaviour.
 - d. Use of violence in any form.
 - e. Casteism or communalism.
 - f. Smoking/consuming alcohol.
 - g. Any form of gambling.
 - h. Exchanging gifts or any money transactions.
 - i. Jumping the school boundary wall.
14. The observance of rules of discipline of the school and good behaviour is an essential condition to a student's continuance in the school. In case a student violates the school rules or indulges in any form of indiscipline, strict action like expulsion/suspension/rustication shall be taken against the student.
15. Parents are required to carry the Parent Identity Card whenever they come to school for attending the PTMs or functions, to buy the uniform or books etc.
16. On birthdays children may distribute only sweets or toffees worth Rs.10/- per child. We urge parents to cooperate with us in this matter; items other than sweets/toffees, if sent, will be returned to the parents. Students are not allowed to give birthday presents in school.
17. Under no circumstances are gifts to be given to members of staff on Teachers' Day or other occasions. However, hand-made cards/flowers are always welcome

RECOMMENDATION TO PARENTS/GUARDIANS

1. Check the haircut, uniform, and punctuality of your ward in the morning.
2. It is always advisable to communicate through ERP about the problems of your ward or for seeking guidance.
3. See that your ward carries books/exercise books according to the timetable for that day. No extra books are allowed.
4. See that he/she prepared for the periodic tests. Also see his/her Report Card and teachers remarks in his/her classwork/homework exercise books and Almanac.
5. Encourage your ward to take a balanced interest in studies, co-curricular activities and sports.
6. Children should not bring crackers, Holi colours, toys, i-pod, mobile phones etc. to the school. Bursting of crackers and playing with colours is liable to lead to expulsion of a student from the school.
7. Your ward should be instructed to be careful about his/her belongings. There should be name tag on blazers and sweaters. Any electronic gadgets or expensive articles should not be brought to school. In case of violation of this rule the article will be confiscated. The school bears no responsibility for articles lost in school. In case of a loss, a letter giving detail of the loss may be sent to the Class Teacher.
8. If your ward is absent from school, he/she must make up for all the work missed by him/her.
9. If your ward is to leave the school campus during school hours (only in case of medical reasons). Parents/guardian should obtain a gate pass from the reception and get it signed from the Class Teacher, Bus Supervisor/Teacher, and Principal. This must be presented to the Guard at the time of leave

LATE ARRIVALS

Students are expected to report to the school on time. The school gates will close 10 mins post the arrival time of students.

ATTENDANCE

Please note that a minimum of 75% attendance is required for a student to appear for the Annual Examinations. This percentage may be relaxed on medical grounds (only with timely provision of a medical certificate by the parents to the school). Please note that promotion to the next class will not be granted in case the student does not attain 75% attendance.

LEAVE RULES

1. Students who have been sick should bring a medical certificate from their doctor on joining school. A copy of the certificate is to be submitted in the school clinic for follow up especially for communicable disease.
2. Parents should fill up the "Record for non-attendance" for each day the student is absent from school stating the reasons for absence. Students will not be admitted to the class without the same.
3. Leave for going out of station should be approved prior to proceeding on leave.
4. A student returning to school after suffering from an infectious or contagious disease, should produce a doctor's certificate permitting him/her to do so. Students suffering from the following diseases must observe the prescribed period of quarantine before returning to class
 - (a) Chicken Pox-Till complete falling of the scabs.
 - (b) Cholera- Till the child is completely well.
 - (c) Measles - Two weeks after the rash disappears.
 - (d) Mumps -Until the swelling has gone: about one month.
 - (e) Jaundice - Six weeks after recovery.
5. Repeated absence without leave or unexplained absence for more than six consecutive days renders the student liable to have his/her name struck off the rolls. Re-admission may be granted only on payment of a fresh admission fee.

CORRECTIVE MEASURES

A. **Yellow Card:** To be issued by the HM/Coordinator for a period of 3 days and signed by the Principal. The card will be returned to the HM/Coordinator. 3 yellow cards mean 1 red card. The card is to be issued for the following:

- (a) Repeated careless and untidy work.
- (b) Coming to school in improper uniform.
- (c) Coming late to school.
- (d) Not bringing the Almanac to school.
- (e) Misbehaviour in the bus & the classroom.
- (f) Not submitting an application for absence immediately after joining back.
- (g) Coming to school in a self-driven scooter, motor cycle or car.
- (h) Using foul/ abusive language.

B. **Red Card:** To be issued by the HM/Coordinator for a period of 4 days. This is to be signed by the Class Teacher, HM/Coordinator and Parent. This is also to be signed after each day by the Class Teacher. At the end of 4 days, cards to be signed by Principal and returned to HM/Coordinator. Two red cards will mean suspension from school for three days. Three red cards will mean expulsion from the school.

The red card will be given for:

- (i) Missing classes (bunking), Assembly, Club period, Library, PE etc.
- (ii) Inappropriate behaviour in the school premises.
- (iii) Cheating during any test or exam.
- (iv) Damaging school property.
- (v) Pushing or fighting in school.
- (vi) Any act of bullying.

C. Students can be asked to leave the school on the following grounds:

- (a) Disciplinary.
- (b) Unsatisfactory progress in academics.
- (c) Detention or repeated detentions in a class. As a rule, only those students will be retained on the roll of this school who can take the school leaving examination and are under 18 years of age.

D. A student who fails twice in the same class will not be permitted to continue his/her studies in the school.

WITHDRAWALS

- a. Admission charges are non-refundable, however, in case of withdrawal before 15th March of that session, 50% of admission fee will be refunded and the rest will be adjusted as admission processing fees.
- b. In case of withdrawal during the academic session, all the fees including transport fee for that particular quarter will be charged and will not be refunded. In case there are any other dues pending, the transfer certificate will be issued only after clearance of the dues.
- c. Absenteeism of the child will not be considered as notice for his/her withdrawal. At least one month's notice in writing is mandatory for withdrawal formalities.
- d. In case the student is absent without any authorized leave for more than two months, the admission will stand cancelled.
- e. The Transfer Certificate can be collected from the school 20 days from the date of clearing all dues.

SCHOOL TRANSPORT AND BUS RULES

Students can avail of the School Transport facility subject to the availability of seats. The routes of the school buses are fixed and the parents should consult the school transport Incharge for necessary details. Bus facility will be provided on a first cum first serve basis.

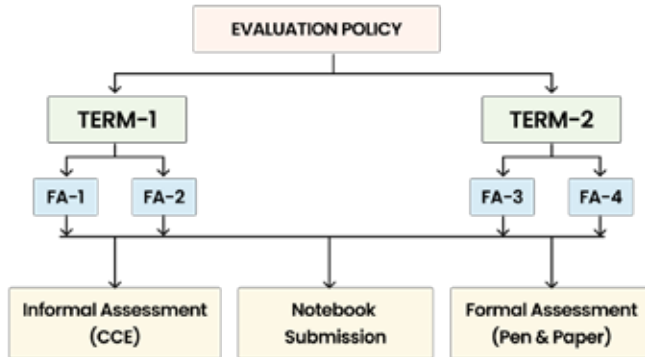
BUS FACILITY

1. Bus fee will be charged on QUARTERLY BASIS i.e., in APRIL, JULY, OCTOBER & JANUARY.
2. For discontinuing the bus facility, at least one month's advance notice should reach the school Transport Department before depositing quarterly fee as per the schedule i.e. APRIL, JULY, OCTOBER & JANUARY.
3. No refund will be permissible once the bus fee has been paid.
4. Quarterly fee will be charged in case the bus facility is required/availed even for a single day. Please note that this is not subject to any discussion.

BUS RULES

1. All the students using the school bus are expected to be on the right side of the bus stops at least five minutes before the arrival time of the bus.
2. **The buses will not wait for the latecomers.**
3. Students should stay away from the main road until the bus arrives.
4. No student should come near the entry door of the bus unless it has made a complete stop.
5. All students must occupy vacant seats immediately after boarding their buses.
6. The front door of the bus is the only authorized entrance and exit.
7. The drivers are authorized to stop buses at the designated stop only, unless otherwise directed by the bus incharge. The list of stops is prepared keeping in view the convenience and safety of all bus commuters and are subject to changes.
8. When the bus is in motion students must not move around in the bus and no part of their body should be outside the bus.
9. Objects of any kind must not be discarded inside or thrown out of the bus.
10. Students will be held responsible for any damage caused to the bus due to negligence or vandalism.
11. Unruly behaviour like shrieking, bullying, shouting, fighting, placing feet on seat is strictly prohibited. Courteous behaviour is expected at all times.
12. The driver's attention must not be distracted for any reason.
13. The bus incharge, and student bus monitors are responsible for maintaining discipline in the buses. Any serious offence must be reported to the Principal.
14. Parents are requested to meet (with prior appointment), the Transport Incharge for Allotment/Withdrawal/Change of Bus routes, atleast five working days before the day of Allotment/Withdrawal/Change of bus routes is required to be made.
15. Parent I Card must be carried by the parent who picks up the student from the bus stop. In case the parent is unable to come to pick up their child, an authority letter or message via SMS/WhatsApp/ERP can be sent from the mobile number which is registered in school records.
16. If the child chooses to break the rules of the bus conduct or safety, it will result in disciplinary action which may include the loss of bus facility for a stipulated period of time or on a permanent basis.
17. The school reserves the right to deny transport facilities to a student who is a defaulter in tuition fees.

Examination Policy 2024-25 Grade I and II



1. Our academic year is divided into two terms, Term 1 and Term 2.
2. To ensure the comprehensive development of our students, we employ two types of assessments:
 - a. Non-Pen and Paper Informal Assessments (NPAP), emphasizing Continuous and Comprehensive Evaluation (CCE). Students' abilities are evaluated through a range of activities, projects, and daily class performances, focusing on skills such as LSR (Listening, Speaking, Reading), verbal reasoning, and critical thinking.
 - b. Pen and Paper Formal Assessments (PAP), providing structured evaluations.
3. Informal Assessments are CCE-based and encompass various parameters including class performance (through activities like worksheets), timely submission of work, and active participation in class activities.
4. Formal Assessments are conducted using pen and paper.
5. In Term 1, there are two Informal Assessments, two Formal Assessments, and Notebooks Submission, each carrying respective weightages.
6. Similarly, Term 2 includes two Informal Assessments, two Formal Assessments, and Notebooks Submission, with corresponding weightages.
7. The Formal Assessments consist of FA-1, FA-2, FA-3, and FA-4, all conducted as pen and paper assessments.
8. Each test has a duration of 40 minutes, following the normal timetable for that day.
9. Students will not receive numerical marks; instead, their performance will be assessed and communicated through grades.
10. The term-end e-report card will reflect the higher grade achieved from the two Formal Assessments (FAs).
11. No Retest will be conducted for the students.
12. Date sheets and syllabi for the Formal Assessments will be shared well in advance to facilitate preparation.

EXAMINATION POLICY 2024-25 CLASSES III TO XII

1. For classes III – VIII , the academic year will be divided into 2 terms and term-end exams will be held at the end of each term.
2. Evaluation will be based on students' continuous academic performance during the year. The examination scheme for periodic assessments and term-end examinations is given below.
3. Promotion policy:
 - a. For Grade III – V, student scoring 40% and above in each subject in annual theory exam will qualify for promotion to the next class.
 - b. For Grade VI – XII, student scoring 33% and above in each subject in annual theory exam will qualify for promotion to the next class.
4. To prepare the students well and face the Class X and XII Board Examination, syllabi of Classes VI–IX and XI are designed as per CBSE guidelines with an increase in learning assessment.
Annual Examination Syllabus:
Class VI – 10% of Term I + Term II
Class VII – 20% of Term I + Term II
Class VIII – 30% of Term I + Term II
Class IX and XI -- Entire Syllabus of Term I and Term I
5. Grades will be given in different areas of co-scholastic learning. For the holistic development of students, co-scholastic activities like Clubs, Specialized Sports, Art, Dance, Music, Health and Physical Education will be carried out and graded term-wise on a 3-point grading scale.
6. The students will also be assessed for discipline which will be based on attendance, sincerity, values, behavior, tidiness, respect for rules and regulations etc., on a 3-point grading scale.
7. **Students found using UNFAIR MEANS during any assessments**
 - a. **In case a student is caught using unfair means in a Periodic Test, student will be marked zero. No retest will be conducted.**
 - b. **In HY/Annual Exam, exam will be cancelled for the student and he/she has to appear for the retest.**
8. **Criteria for Excellence Award – Academics**

Classes VI to XII	Required % in Aggregate 90% and above	Subjects All the scholastic subjects.
----------------------	--	--
9. Computer science - Theory and Practical assessment will be conducted for Grade III onwards.

10. RETEST Policy – No retest will be conducted for Periodic Tests.

- a. For Grade III - V
 - i. If a student does not attend a Periodic Test due to medical reason and furnishes a hard copy of medical certificate from a competent authority, Medical leave (ML) will be marked in the report card.
 - ii. If a student misses a Periodic Test due to family emergency, and furnishes the hard copy of a proper leave application, Leave of absence (LA) will be marked in the report.
 - iii. If a student misses a Periodic Test due to any other reason, Absent (AB) will be marked in the report card.
- b. For Grade VI – XII
 - i. If a student does not appear in Periodic Test 1 and gives Periodic Test 2, his/her marks of Periodic Test 2 will be reflected in Term 1 report card.
 - ii. If a student gives Periodic Test 1 but does not appear in Periodic Test 2, his/her marks of Periodic Test 1 will be reflected in Term 1 report card.
 - iii. If a student does not attend both Periodic Test 1 and Periodic Test 2 due to medical reasons, furnishes a hard copy of medical certificate from competent authority in both cases, Medical Leave (ML) will be marked in Term1 report card.
 - iv. If a student does not attend both Periodic Test 1 and Periodic Test 2 due to family emergency, and furnishes the hard copy of a proper leave application in both cases, Leave of absence (LA) will be marked in the report.
 - v. In all other scenarios, Absent (AB) will be marked in the report card.
 - vi. If a student does not attend Periodic Test 3 due to medical reason and furnishes a hard copy of medical certificate from competent authority, the average of PT1 and PT2 will be taken for Term 2 report card.
 - vii. If a student does not attend Periodic Test 3 due to family emergency, and furnishes the hard copy of a proper leave application, Leave of absence (LA) will be marked in the report. If a student does not attend PT3 in any other scenario apart from the ones mentioned, Absent(AB) will be marked in the report card.
- c. Retests will be conducted for Half Yearly/Annual Examinations for the following scenarios ONLY:
 - i. Medical reason – Student submits a proper medical certificate from competent authority, within three working days after the term end Exam.
 - ii. Family emergency – If student misses term end exam due to demise in immediate family and submits a proper leave application within three working days after the exam. The decision of Principal in this regard will be final.

11. E-report card will be generated and shared with parents at the end of each term.

ALLOCATION OF MARKS CLASS III

TERM I April to September			TERM II October to March	
	Assessment	Marks	Assessment	Marks
Class III	Periodic Test 1	10 marks	Periodic Test 2	10 marks
	Subject Enrichment Activity (Holiday HW)	10 marks	Subject Enrichment Activity	10 marks
	Notebook	5 marks	Notebook	5 marks
	Oral Assessment	5 marks	Oral Assessment	5 marks
	Half Yearly Exam	20 marks	Annual Exam	20 marks
	Total 50 marks		Total 50 marks	

ALLOCATION OF MARKS CLASSES IV AND V

TERM I April to September			TERM II October to March	
	Assessment	Marks	Assessment	Marks
Classes IV and V	Periodic Test 1	20 marks	Periodic Test 2	20 marks
	Subject Enrichment Activity (Holiday HW)	10 marks	Subject Enrichment Activity	10 marks
	Oral Assessment	10 marks	Oral Assessment	10 marks
	Notebook	10 marks	Notebook	10 marks
	Half Yearly Exam	50 marks	Annual Exam	50 marks
	Total 100 marks		Total 100 marks	

ALLOCATION OF MARKS CLASSES VI TO VIII

TERM I April to September			TERM II October to March	
	Assessment	Marks	Assessment	Marks
Classes VI to VIII	Periodic Test 1	20 marks	Best of the two PTs (Scaled to 10)	Periodic Test 3 20 marks (Scaled to 10)
	Periodic Test 2	20 marks		
	Subject Enrichment Activity (Holiday HW)	5 marks	Subject Enrichment Activity	5 marks
	Notebook	5 marks	Notebook	5 marks
	Half Yearly Exam	80 marks	Annual Exam	80 marks
	Total 100 marks		Total 100 marks	

ALLOCATION OF MARKS CLASS IX*

Assessment	Marks	
Periodic Test 1	20 marks	Average of Best of the two PTs (Scaled to 5)
Periodic Test 2	20 marks	
Periodic Test 3	20 marks	
Multiple Assessments	5 marks	
Portfolio	5 marks	
Subject Enrichment Activity	5 marks	
Half Yearly Exam	80 marks	30% of HY exam score will be taken in Annual Performance report
Annual Examination	80 marks	70% of Annual Exam score will be taken in Annual Performance report

SCHEME OF EXAMINATION CLASS X*

Assessment	Marks
Periodic Test 1	20 marks
Periodic Test 2	20 marks
Multiple Assessments/Practicals	5 marks
Portfolio/Practical File	5 marks
Subject Enrichment Activity/Practicals	5 marks
Half Yearly Exam	80 marks
Pre-Board 1	80 marks
Pre-Board 2	80 marks

ALLOCATION OF MARKS CLASS XI*

Assessment	Marks	
Periodic Test 1	20 marks	Average of Best of the two PTs (Scaled to 5)
Periodic Test 2	20 marks	
Periodic Test 3	20 marks	
Multiple Assessments	5 marks	
Portfolio	5 marks	
Subject Enrichment Activity	5 marks	
Half Yearly Exam	Theory - 30/70/80 marks + Practical(70/30/20 marks)	30% of HY exam score will be taken in Annual Performance report
Annual Examination	Theory - 30/70/80 marks + Practical(70/30/20 marks)	70% of Annual exam score will be taken in Annual Performance report
TOTAL	120 marks	

SCHEME OF EXAMINATION CLASS XII*

Assessment	Marks	
Periodic Test 1	20 marks	Average of Best of the two PTs (Scaled to 5)
Periodic Test 2	20 marks	
Multiple Assessments	5 marks	
Portfolio	5 marks	
Subject Enrichment Activity	5 marks	
Half Yearly Exam	Theory - 30/70/80 marks + Practical(70/30/20 marks)	
Pre-Board 1	Theory - 30/70/80 marks + Practical(70/30/20 marks)	
Pre-Board 2	Theory - 30/70/80 marks + Practical(70/30/20 marks)	

For allocation of marks for each subject in class X and XII, separate, subject specific guidelines will be shared by the teachers.

***Subject to CBSE rules and regulations and amendments.**

IGNITED MINDS- SCHOOL LIBRARY

'Books are uniquely portable magic.'

The school library is open to all bonafide students of the school. All classes are provided with at least one library period per week. Students must observe the following rules:

1. Students are allowed to borrow books only on their own I card.
2. Books other than reference books shall be issued for 1 week.
3. The students must return the borrowed book by the due date. Post due date a fine of Rs 10 per day shall be charged.
4. If the book is lost or damaged, then either the same book will have to be replaced or the current price of the book shall be charged to the student.
5. Students must ensure that post reading, books are kept at the assigned shelf only.
6. Students are not allowed to bring their personal books into the library.
7. Students must maintain absolute silence in the library.



Monthly Themes

for the session 2024–25



Emotional Intelligence





Self Awareness



Diyaa

Class XII-C



Critical Thinking

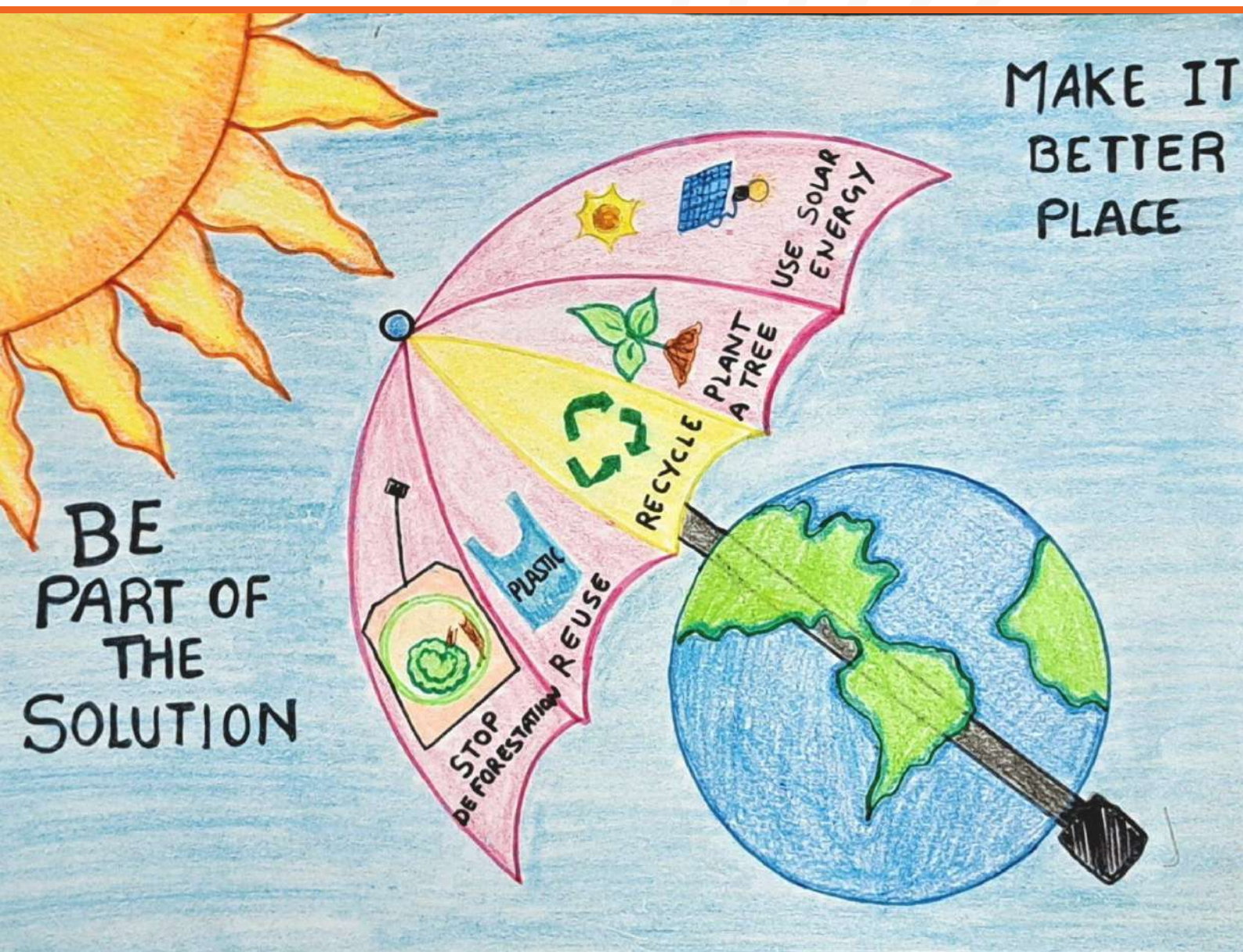


Sathvik Gannavarpu

Class IX-E



Being a Global Citizen



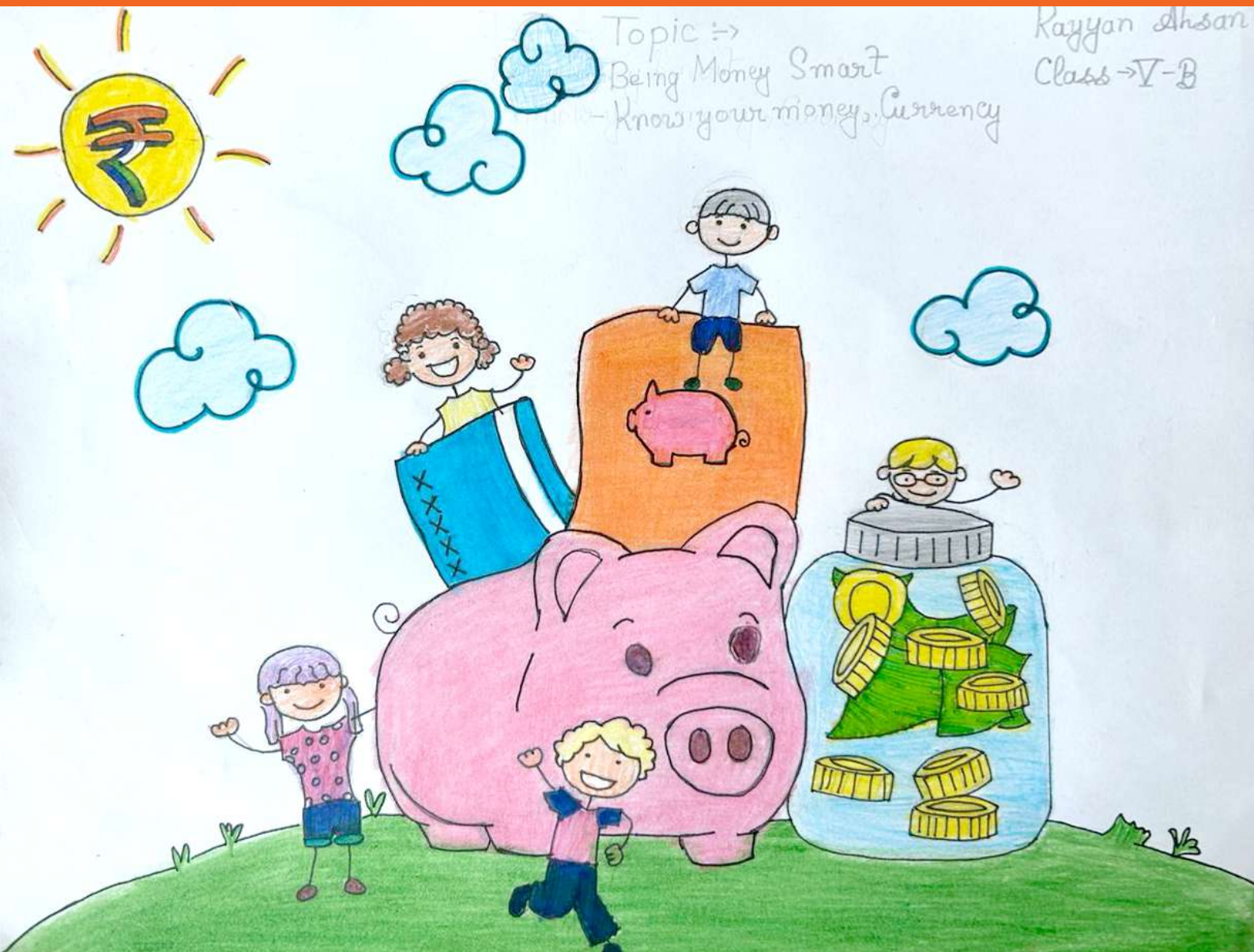
Avika Singhal

Class III-D



Being Money Smart

Know your money, Currency



Rayyan Ahsan

Class VI-B





Banking and Saving

Types of accounts, account opening, visit to a bank

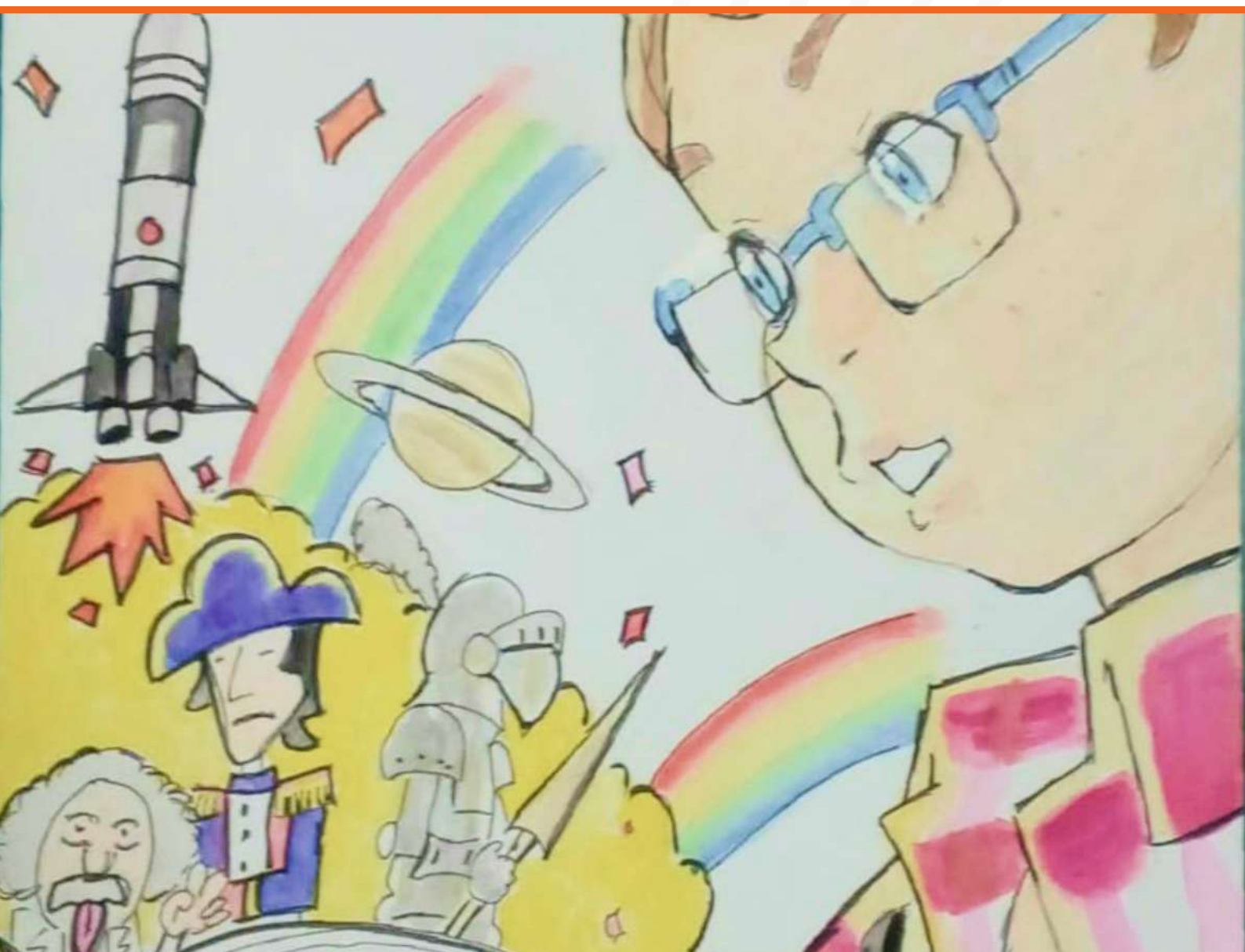


Samriddhi Shyam Dev

Class VII-E



Being Curious and Explorative



Pusty

Class XII-C



Budgeting, rate of Interest





Creativity

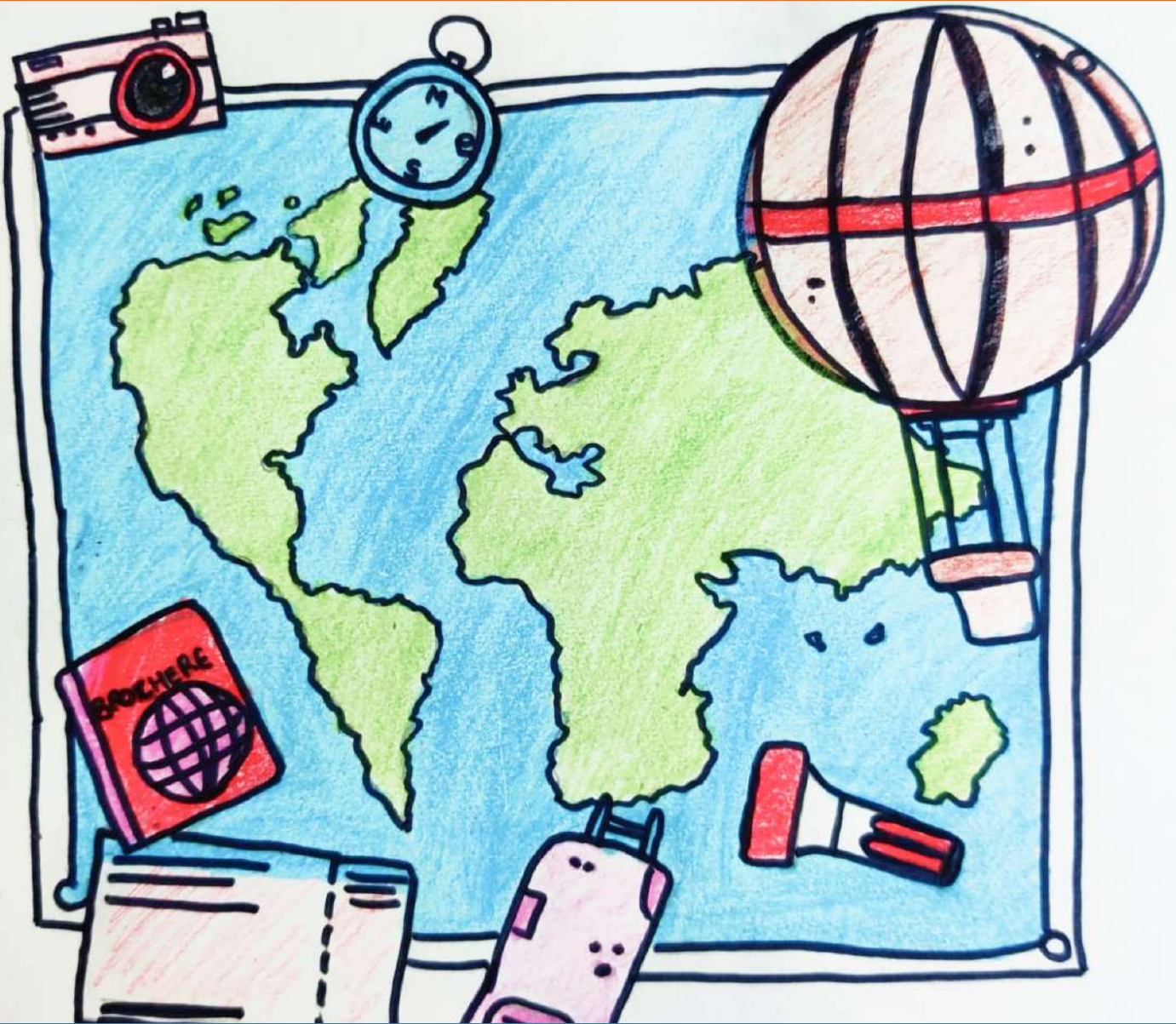


Garvik Agarwal

Class III-F



Travelling



Advait

Class IX-C



Reflecting & Consolidating our learnings



Samriddhi Shyam Dev

Class VII-E



PACIFIC WORLD SCHOOL

HS-02, Tech Zone-4, Greater Noida (West),
Gautam Budh Nagar- 201308, Uttar Pradesh



pacificworldschool.com



889 911 7704 | 964 337 0000